



Gestalt PnID™-FAQ

Intelligent Plant Ltd.

Company number: SC299081

Registered address: First Floor,

VAT number : 887 3049 84

489 Union Street,

E-mail : info@intelligentplant.com

Aberdeen,

Phone : 01224 596001

AB11 6AZ.

Revision History:

Date	Version	Description	Created by (Initials)	Reviewed by
26/11/2019	0.1	Create FAQ	TG	BJN
11/12/2019	0.2	Additional info added for Creating Trends from PnID	TG	
18/03/2020	0.3	Spelling error updates	TG	
07/02/2022	0.4	Updated to reflect new UI and logo	TG	

© Copyright 2022, Intelligent Plant Ltd.



Table of Contents

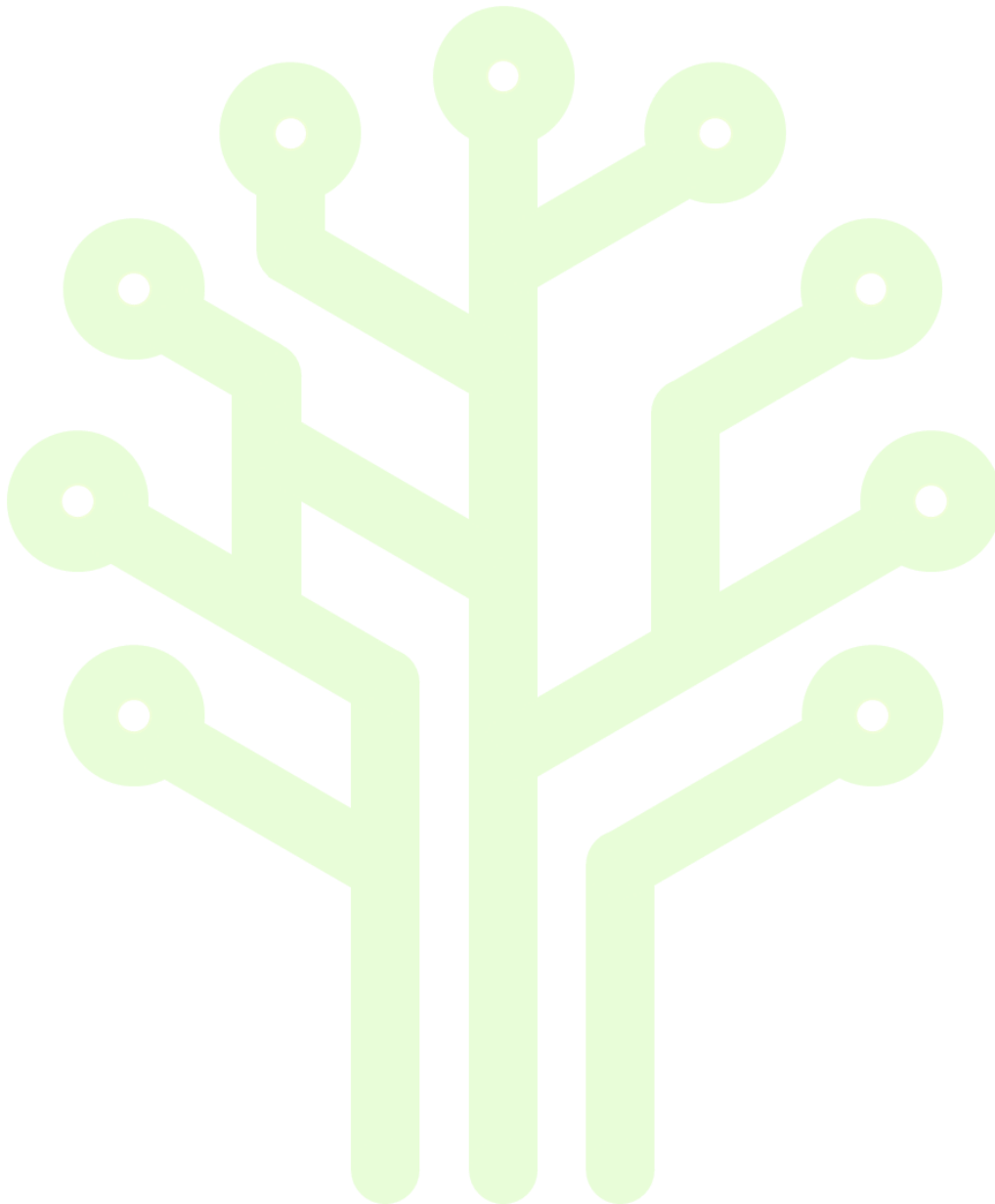
1	Purpose of Document.....	5
2	What's New	6
2.1	February 2022	6
2.1.1	<i>User Interface Updates</i>	<i>6</i>
2.2	March 2020	6
2.2.1	<i>Minor spelling error.....</i>	<i>6</i>
2.3	December 2019.....	6
2.3.1	<i>Creating a Trend in PnID</i>	<i>6</i>
3	FAQ	7
3.1	Keyboard Shortcuts	7
3.1.1	<i>Edit Mode.....</i>	<i>7</i>
3.2	Canvas Grid-Enable/Disable	7
3.2.1	<i>Run Mode.....</i>	<i>7</i>
3.2.2	<i>Undo</i>	<i>7</i>
3.2.3	<i>Redo.....</i>	<i>7</i>
3.2.4	<i>Save.....</i>	<i>8</i>
3.3	Copy.....	8
3.4	Paste.....	8
3.5	Tags.....	8
3.5.1	<i>Get Tag List.....</i>	<i>8</i>
3.5.2	<i>Removing Unused Tags</i>	<i>9</i>
3.6	Link to Another Dashboard.....	9
3.6.1	<i>Hyperlink</i>	<i>9</i>
3.6.2	<i>Linked PnID.....</i>	<i>9</i>
3.7	Import and Export of Dashboards.....	10
3.7.1	<i>Import a Dashboard</i>	<i>10</i>
3.7.2	<i>Export a Dashboard.....</i>	<i>11</i>
3.8	Sharing Your Work	12
3.8.1	<i>Share a Dashboard.....</i>	<i>12</i>
3.8.2	<i>Share a Folder</i>	<i>13</i>
3.9	Creating a Trend in PnID.....	13
3.10	Formatting Text	13

Figures

Figure 3-1 Edit Mode Keyboard Shortcut	7
Figure 3-2 Edit Mode – Disable or Enable Canvas Grid – G	7
Figure 3-3 Run Mode Keyboard Shortcut	7
Figure 3-4 Undo Keyboard Shortcut	7
Figure 3-5 Redo Keyboard Shortcut	7
Figure 3-6 Save Option.....	8
Figure 3-7 Save – Ctrl+C	8
Figure 3-8 Save – Ctrl+V	8
Figure 3-9 Debug – Get Tag List	8
Figure 3-10 Tag Manager.....	9
Figure 3-11 Links in PnID	9
Figure 3-12 Changing a File Extension	10
Figure 3-13 Import File.....	10
Figure 3-14 Imported File	10
Figure 3-15 Save Imported File	11
Figure 3-16 Dashboard Save Successful.....	11
Figure 3-17 Export a Dashboard.....	11
Figure 3-18 Dashboard Exported.....	12
Figure 3-19 Share a Dashboard.....	12
Figure 3-20 User and Access Type.....	12
Figure 3-21 Creating a Trend in PnID	13
Figure 3-22 Adding Additional Tags	13
Figure 3-23 Text - Maximum Width Setting.....	14
Figure 3-24 Text – Line Height Setting	14

1 Purpose of Document

This document gives answers to frequently asked questions and will enhance a user's knowledge of Gestalt PnID.



2 What's New

This section allows users who may have already browsed this user guide a quick link option to look at the new features and enhancements.

2.1 February 2022

2.1.1 User Interface Updates

Images and some text updated to reflect new UI, updates within the Industrial App Store and new logo

2.2 March 2020

2.2.1 Minor spelling error

After Figure 3-14. The paragraph that's starts:

Select Personal Dashboards, select Save As. A pop-up will appear with the existing name of the dashboard. If you wish to keep the same name, select Ok (If you wish to change the name of the dashboard, type in the new name in the filename area. Select Ok).

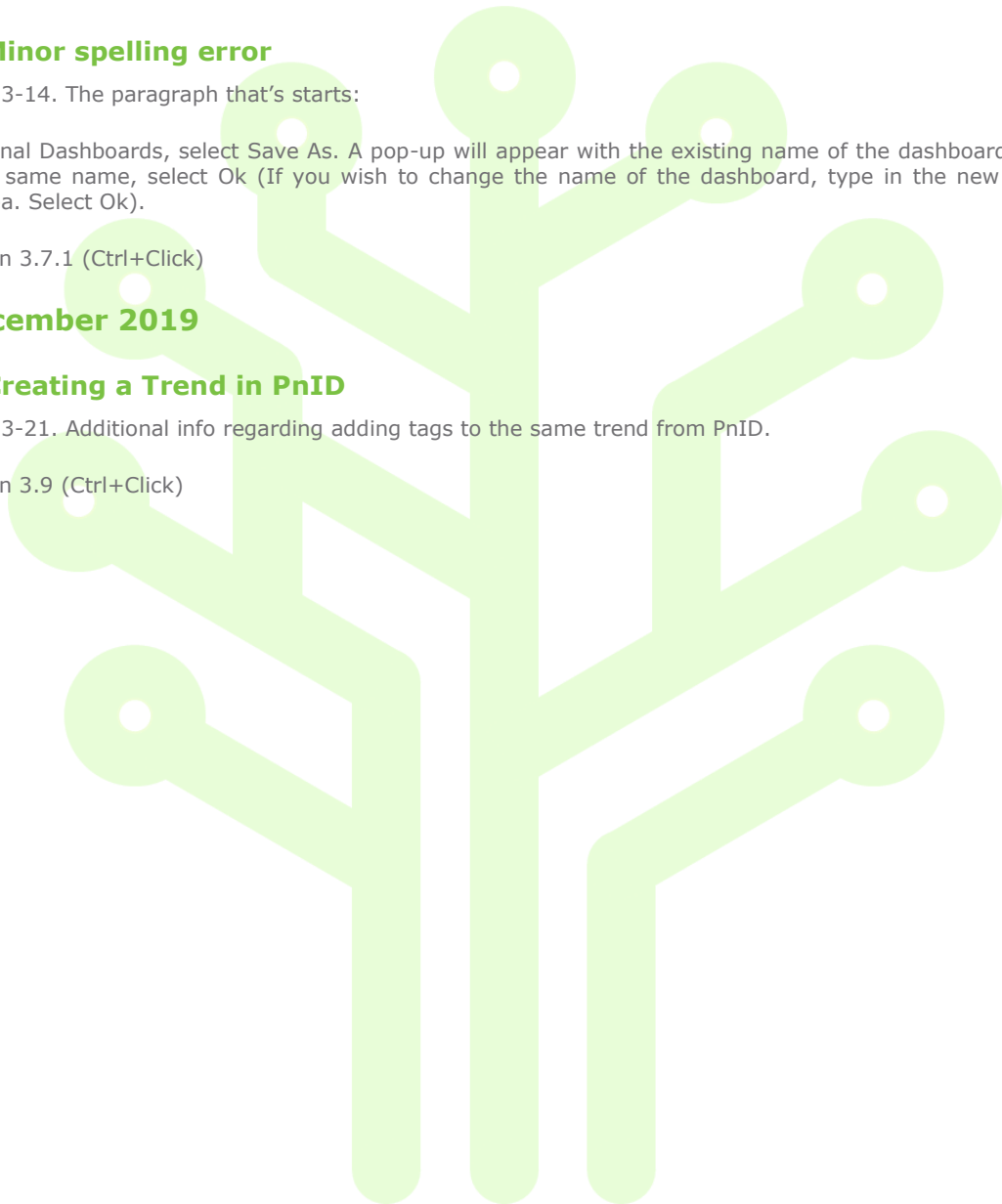
Go to Section 3.7.1 (Ctrl+Click)

2.3 December 2019

2.3.1 Creating a Trend in PnID

After Figure 3-21. Additional info regarding adding tags to the same trend from PnID.

Go to Section 3.9 (Ctrl+Click)



3 FAQ

3.1 Keyboard Shortcuts

Q. Are there any keyboard short cuts that would save always going to the left-side panel?

A. The keyboard shortcuts available in PnID are:

3.1.1 Edit Mode

A. To use Edit Mode select Ctrl+E on your keyboard.



Figure 3-1 Edit Mode Keyboard Shortcut

3.2 Canvas Grid-Enable/Disable

Once in Edit Mode a grid will appear immediately on the canvas. To disable or enable the canvas grid select G on your keyboard.



Figure 3-2 Edit Mode – Disable or Enable Canvas Grid – G

3.2.1 Run Mode

A. To use Run Mode select Ctrl+R on your keyboard.



Figure 3-3 Run Mode Keyboard Shortcut

3.2.2 Undo

A. To Undo something in edit mode select Ctrl+Z on your keyboard.



Figure 3-4 Undo Keyboard Shortcut

3.2.3 Redo

A. To Redo something in edit mode select Ctrl+Y on your keyboard.



Figure 3-5 Redo Keyboard Shortcut

3.2.4 Save

A. To Quick Save select Ctrl+S on your keyboard.



Figure 3-6 Save Option

3.3 Copy

In Edit Mode select Ctrl+C.



Figure 3-7 Save – Ctrl+C

3.4 Paste

In Edit Mode select Ctrl+V.



Figure 3-8 Save – Ctrl+V

3.5 Tags

3.5.1 Get Tag List

Q. Can I get a list of the tags that are in my dashboard?

A. In edit mode go to the right-side panel and select Debug. Select Tag List.

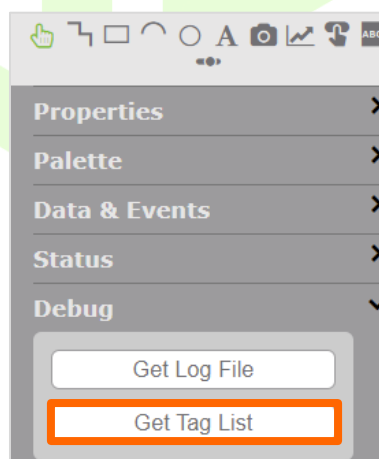


Figure 3-9 Debug – Get Tag List

The Tag Manager pop-up will appear, it shows the datasource name and the number of tags in the dashboard.

Select the datasource name and the tag list will appear, select any tag to see the timestamp, numeric and string value and status appear in that pop-up. To download the list of tags, select the Export Data icon at the right-hand side of the pop-up. You will be able to see a csv file downloading at the bottom left of your screen. Once exported, your file can be found in your downloads area.

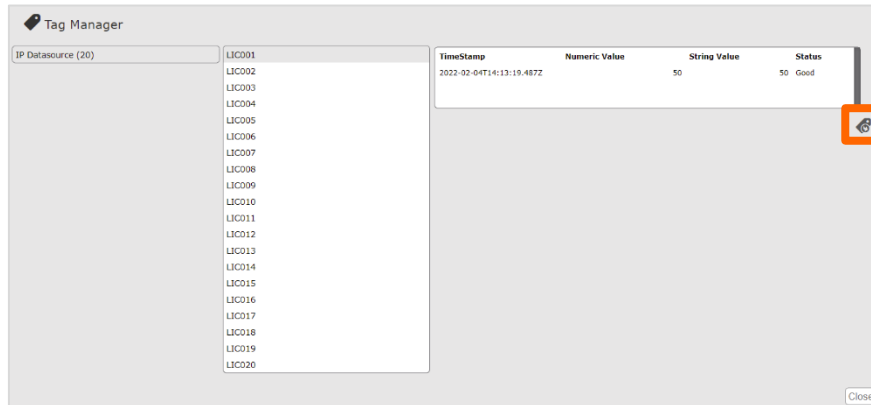


Figure 3-10 Tag Manager

3.5.2 Removing Unused Tags

Q. I've been looking at my tag list and there are tags that shouldn't be there. Why is that?

A. You may have copied and renamed a previous dashboard; unused tags may still be bound to animations. Select the animation and either update the tag or remove the animation if it is no longer required. Once you save the dashboard the unused tags will be removed.

3.6 Link to Another Dashboard

Q. Can I set up links in PnID?

A. The links available in the Properties Panel are – Hyperlink and Linked PnID.

3.6.1 Hyperlink

Use Hyperlink if the pages are outwith PnID – Select the item within the drawing you want to link from, and in the Properties Panel Hyperlink area, type in the url you want to link to:

- <https://appstore.intelligentplant.com/>

3.6.2 Linked PnID

Use Linked PnID if the dashboards are within PnID – Select the item within the dashboard you want to link from, and in the Properties Panel Linked PnID area, type the folder name and dashboard name you want to link to:

- FolderName\DashboardName.PnID

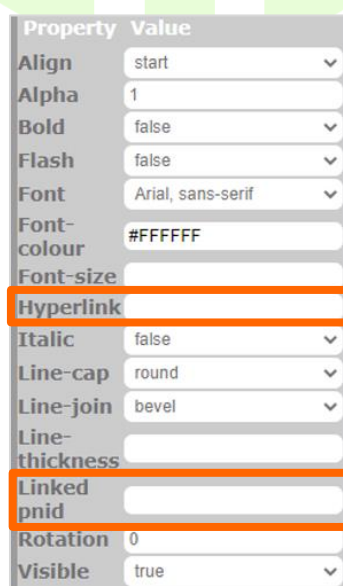


Figure 3-11 Links in PnID

3.7 Import and Export of Dashboards

3.7.1 Import a Dashboard

Q. Can I import any type of drawing file?

A. Import from other industry standard software e.g. ProcessBook & NetDraw. The files are parsed then imported.

You can also import a .txt or .PnID file. Best practise is to rename a .txt to a .PnID file before importing. Right click on the file name and rename from .txt to .PnID file extension.

A pop-up will appear saying the file might become unusable. Are you sure you want to change it? Select Yes.

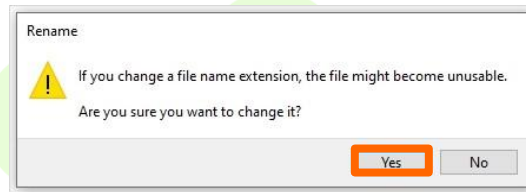


Figure 3-12 Changing a File Extension

Open the Left-Side Panel, select Dashboards, select Import File. Search and select the file you wish to import. Select Open.

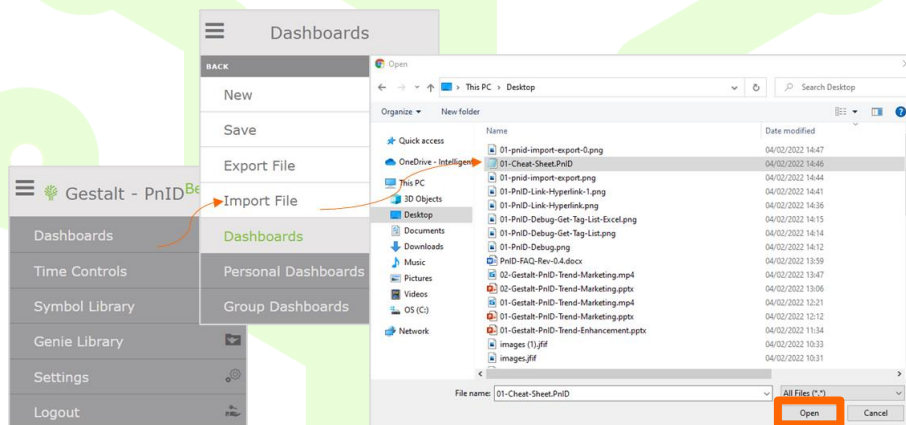


Figure 3-13 Import File

The dashboard will appear in the canvas area.

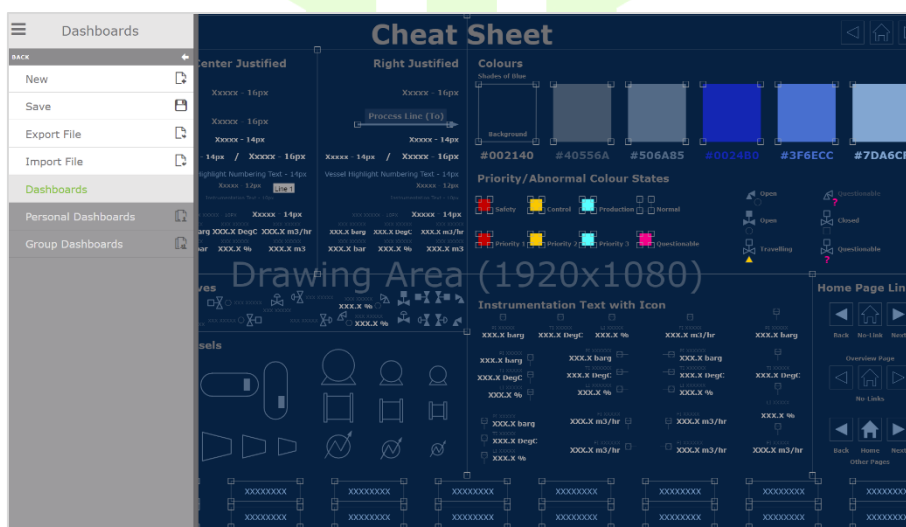


Figure 3-14 Imported File

Select Personal Dashboards, select Save As. A pop-up will appear with the existing name of the dashboard. If you wish to keep the same name, select Ok (If you wish to change the name of the dashboard, type in the new name in the filename area. Select Ok).

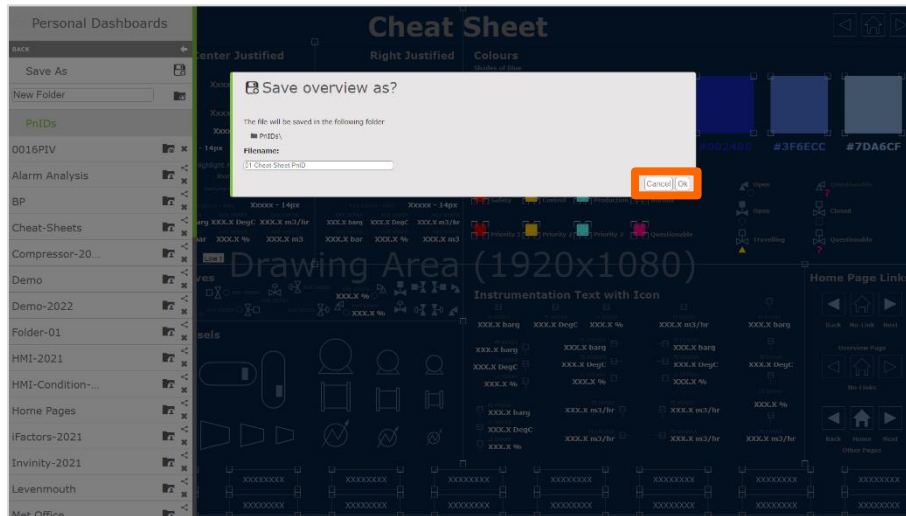


Figure 3-15 Save Imported File

A pop-up will appear indicating a successful save. Select Ok.

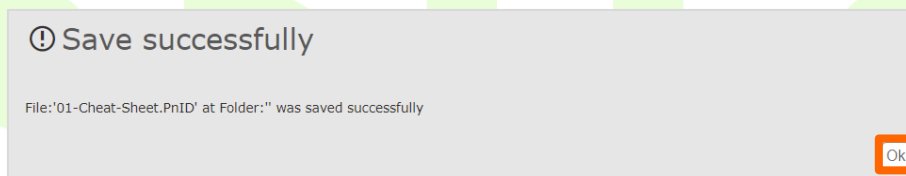


Figure 3-16 Dashboard Save Successful

3.7.2 Export a Dashboard

Q. How do I export a dashboard?

A. The dashboard you are exporting should already be on your canvas. Select Dashboards from the left-side panel. Select Export File to see the file being downloaded at the bottom left of your screen. Once exported, your dashboard can be found in your downloads area.

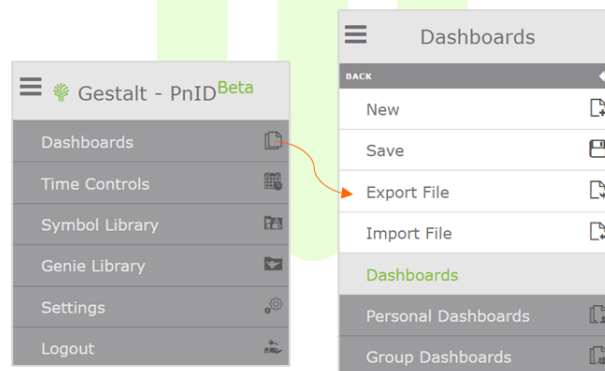


Figure 3-17 Export a Dashboard

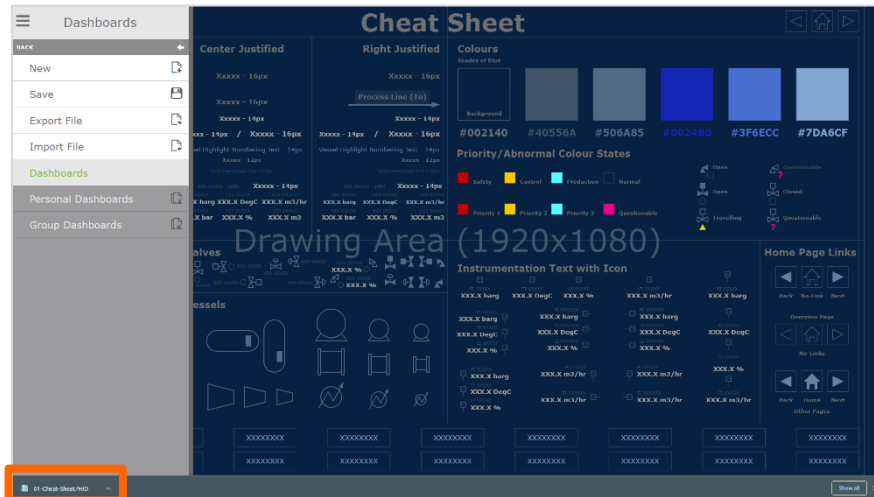


Figure 3-18 Dashboard Exported

3.8 Sharing Your Work

Q. I've created some dashboards/folders and would like to share them with my colleagues? How do I do that?

3.8.1 Share a Dashboard

- A. To share one dashboard, select the share icon at the top right of the dashboard name. Select Users or groups from the Users/Groups drop-down list.

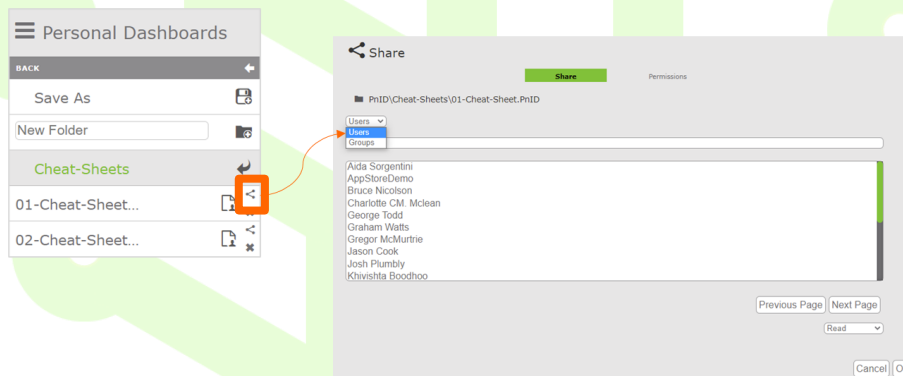


Figure 3-19 Share a Dashboard

Select the user you wish to share with, select whether you wish to give that user Read, Write or Admin access from the drop-down list (near the bottom right of the pop-up) select Ok.

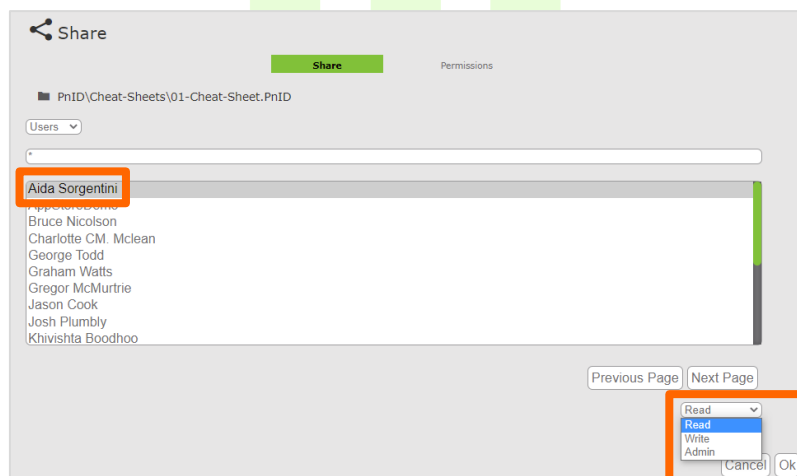


Figure 3-20 User and Access Type

3.8.2 Share a Folder

Sharing a folder follows the same steps as a sharing a dashboard. Select the share icon from the top right of the folder name. Select Users or groups from the Users/Groups drop-down list.

Select the user you wish to share with, select whether you wish to give that user Read, Write or Admin access from the drop-down list (near the bottom right of the pop-up) select OK.

3.9 Creating a Trend in PnID

Q. How do I create a trend when I'm in PnID?

A. Right-click on any animation in your dashboard and choose a time, then choose **In New Window**. Gestalt Trend will open in a new tab and you can view the tag you selected in trend view.

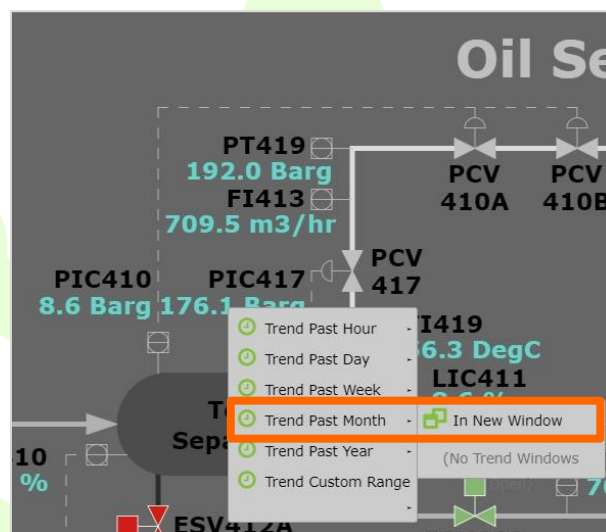


Figure 3-21 Creating a Trend in PnID

To add additional tags to your trend right-click and select another tag, choose the same time, choose **In Window 1** and this tag will appear in the same trend that you have already created. Continue adding tags this way. Save your trend.

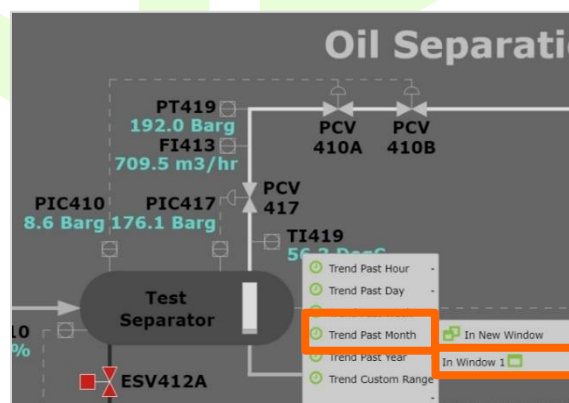


Figure 3-22 Adding Additional Tags

Note:

If you add a tag with a different timescale to **In Window 1** it will not appear in the same window of the tags you have already added to that single trend.

3.10 Formatting Text

Q. I'd like my text to be on two lines, do I have to have two separate pieces of text?

A. You'll have one piece of text. Add a piece of text to your canvas, select the text, go to properties, change **Maximum Width** to a different number until your text is on two lines.

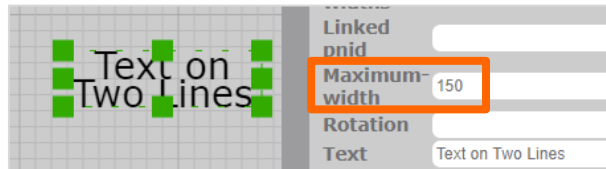


Figure 3-23 Text - Maximum Width Setting

Q. I've done that but now my text is too close together.

A. Select the text, go to properties and change the **Line-Height** to a different number until you're happy with the spacing.

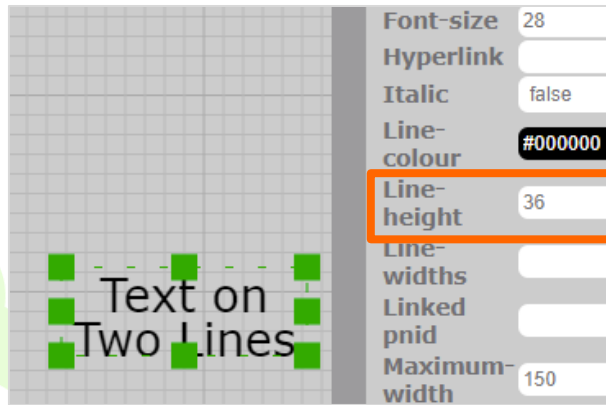
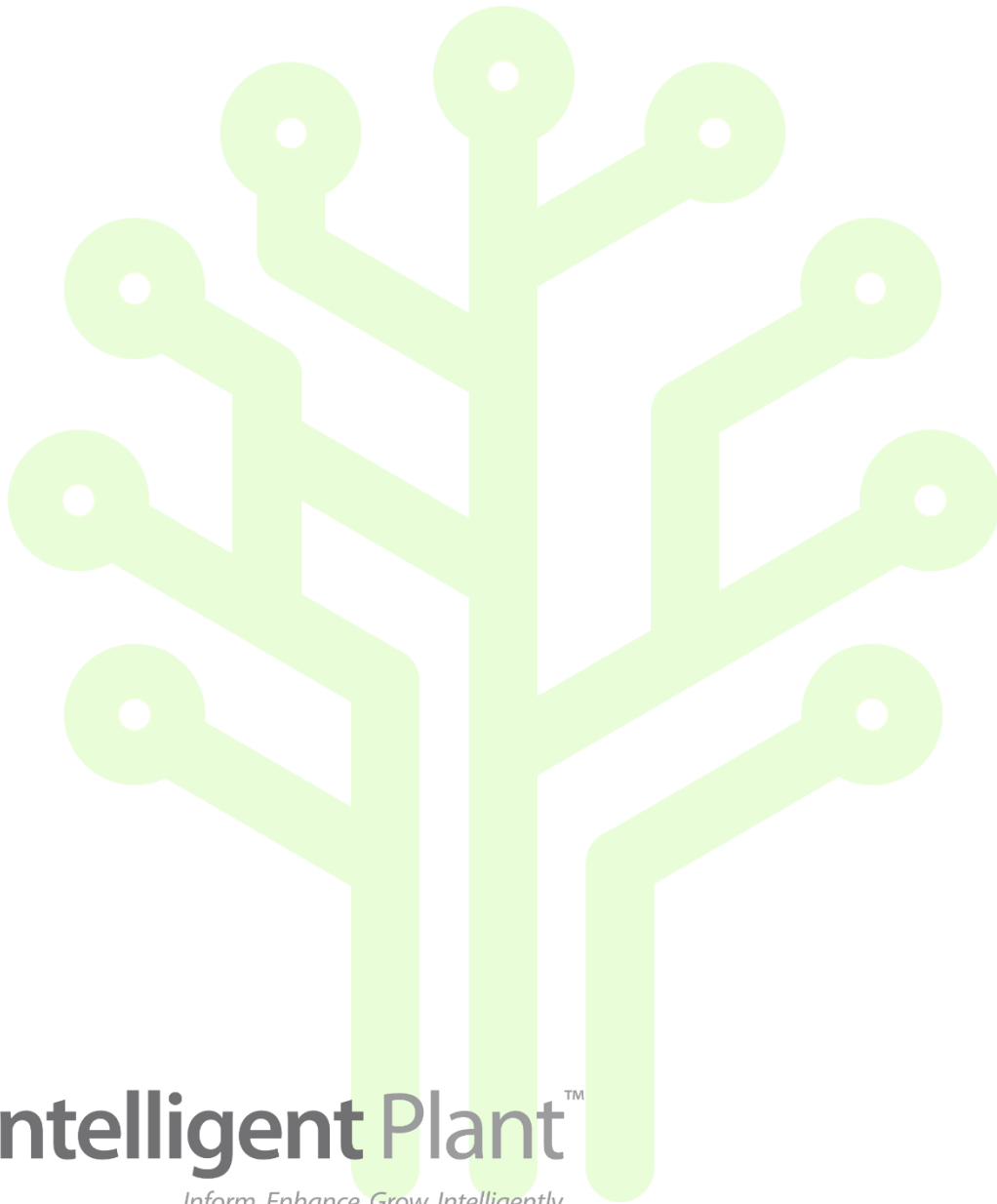


Figure 3-24 Text – Line Height Setting



Intelligent Plant Ltd

First Floor

489 Union Street

Aberdeen

AB11 6AZ
